

✓ **Renseignements client :**

Carrosserie :
Nom du contact :
N° Tél. :

N° département :
Mail :
N° FAX :

✓ **Renseignements véhicule porteur :**

Marque : Modèle : Empattement :

✓ **Dimensions du plateau :**

Longueur utile (**Lu**) :mm
Longueur hors tout (**L**) = Lu + 130mm

Largeur utile (**lu**) :mm
Largeur hors tout (**l**) = lu + 60mm

✓ **Choix du plancher :**

- Bois épaisseur 18mm (non fournis)
 Alu épaisseur 30mm Lisse Strié
 épaisseur 40mm Lisse Strié

Longerons faux châssis :

Hauteur :mm
Ecartement châssis (**X**) :



✓ **Ridelles :**

- Brutes Anodisées
 Latérales : Hauteur :mm
 Arrière : Hauteur :mm
 Marche pied : Qté :
 Poteaux arrière : Bruts Anodisés

Qté/côté : → à partir de 2, rajout de poteaux intermédiaires alu entre les ridelles :

- Bruts Anodisés

✓ **Face avant :**

- Brute Anodisée
Hauteur (**F**) :mm

✓ **Porte échelle avant :**

- Avec Sans
Hauteur (**P**) :mm Démontable : Oui Non
↳ dessus face AV à dessus poteaux

✓ **Porte échelle arrière :**

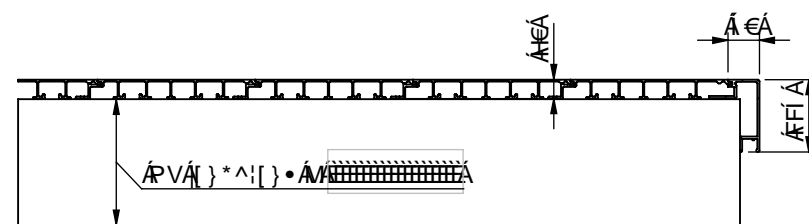
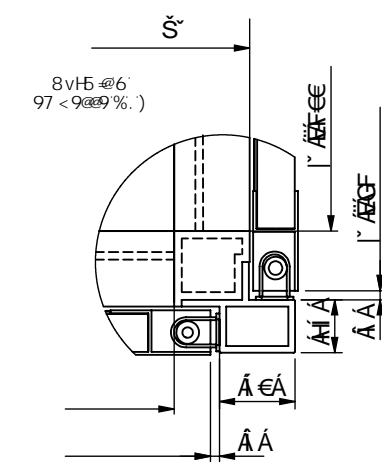
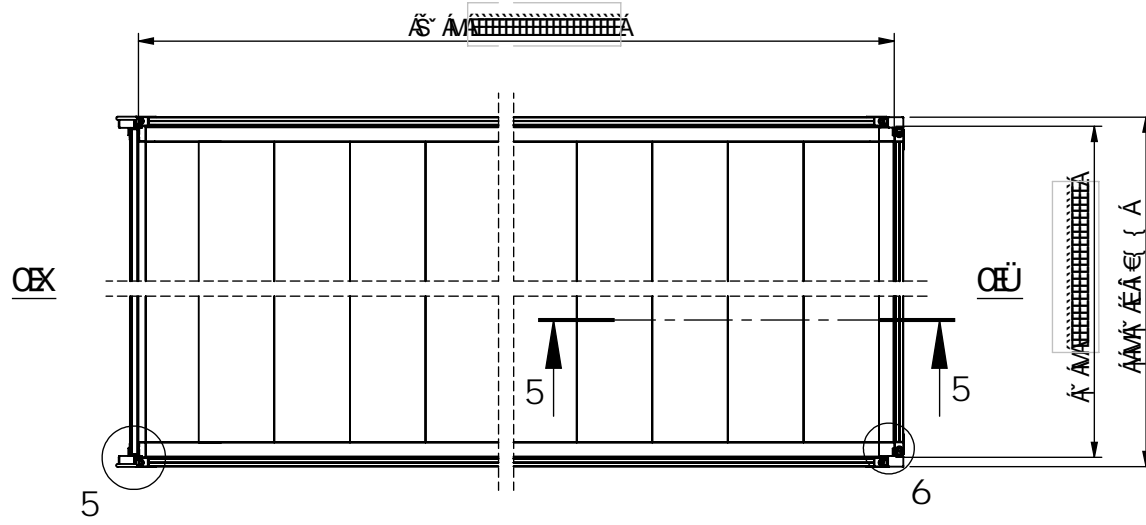
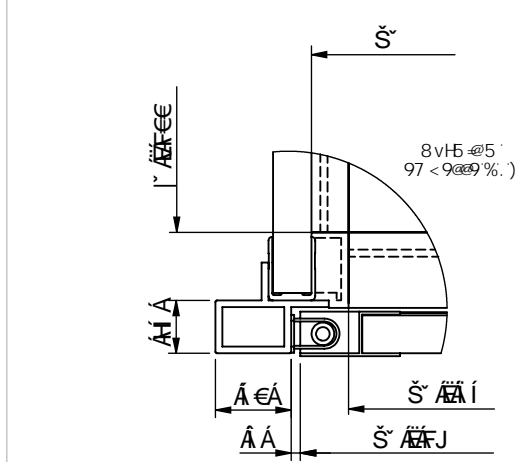
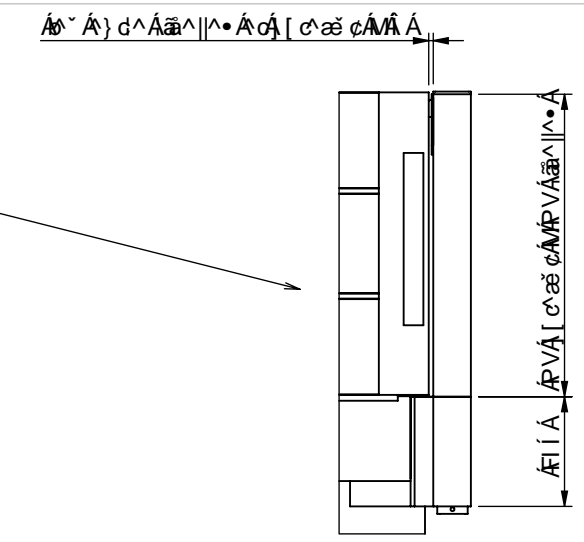
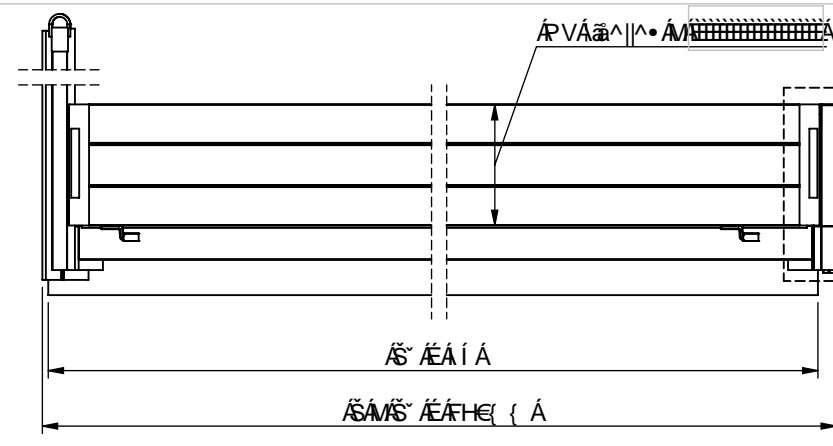
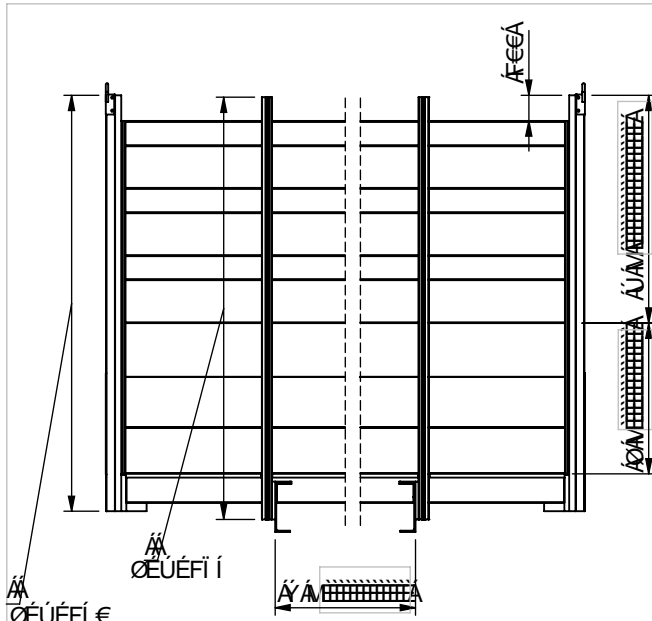
- Avec Sans
Hauteur :mm Démontable : Oui Non

✓ **Accessoires :**

- Ailes : Monte simple Monte jumelée
 Protections latérales : Avec supports Sans supports
 Anneaux d'arrimage : Encastrés dans les rives Qté/côté :
 Encastrés dans le plancher Qté/côté :

✓ **Options de montage :**

- Montage dans nos ateliers : Oui Non → Avec kit de fixation
 Sans kit de fixation



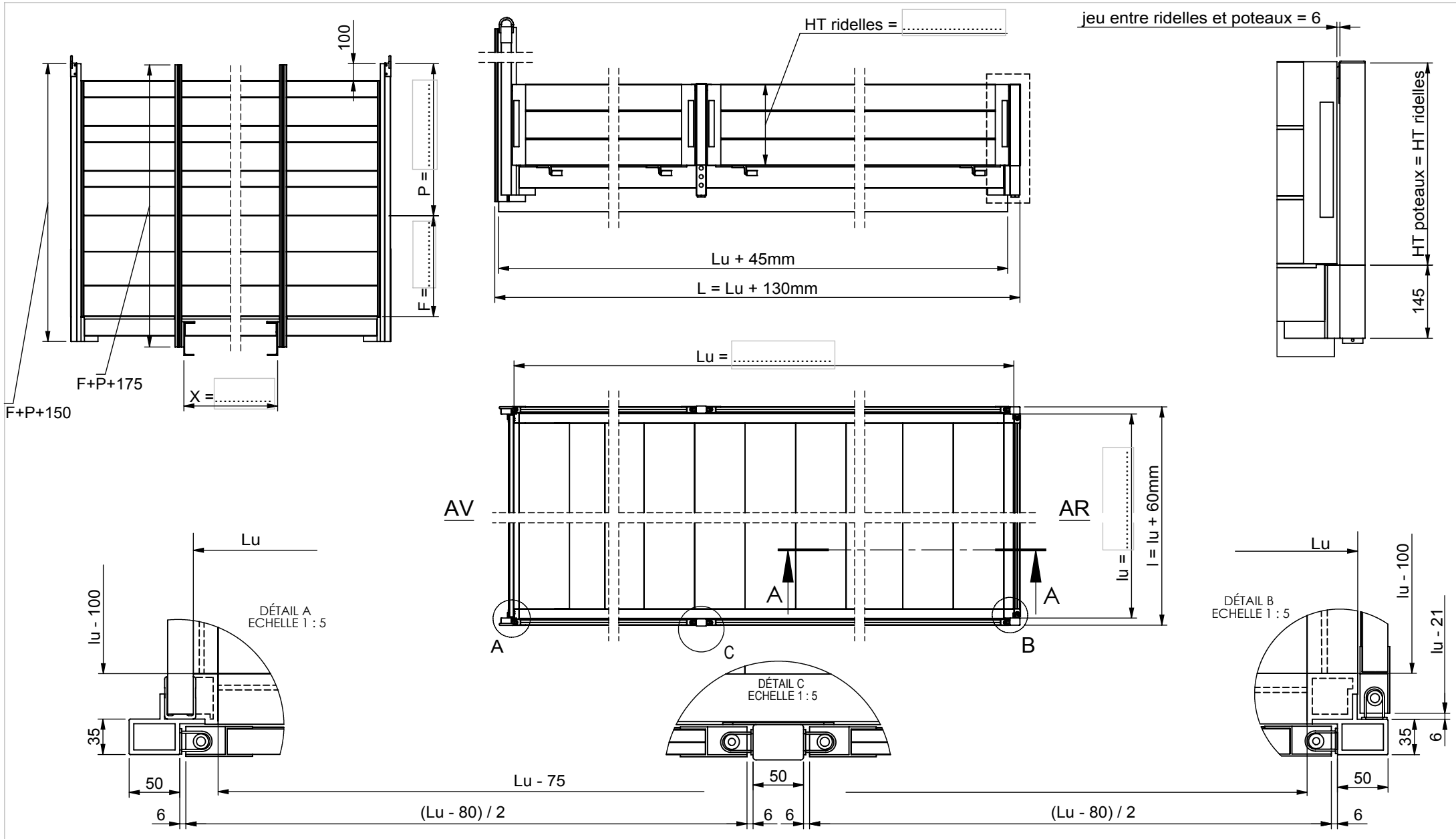
7 C I D 9 5 1 5
97 < 90% . % &

Öä ^ } . q } . Å i q & q a p . Å k
 Š Å N V Š I } * ^ ^ i Å c p
 S Å M N V Š I } * ^ ^ i Å q } . Å i ~ c Å
 I Å M N V Š e * ^ ^ i Å c p
 I Å M N V Š e * ^ ^ i Å q } . Å i ~ c Å
 Y Å M N V O & e c { ^ } c Å ~ Å e c & @ . . a
 Q Å M N V p e c ^ i Å & Å e q c
 U Å M N V p e c ^ i Å i c Å . & @ | ^

Úlææ æ Å e Å i q & @ i Å e p

MEROUR Z I Å q a ~ d a i Å
 G F Å ~ Å S i ~ a O . . a q }
 LES ACCESSOIRES I J I e c U a q c t a a ^ } c Å q | ^
 DE CARROSSERIE INDUSTRIELLE V. I Å C H D E Å J Å I Å I Å F
 C e e Å C H D E Å J Å I Å I Å F

Ö Å e . . q Å . . d e q i | i c Å e Å t Ö U U W Ü Å c Å ^ Å ~ Å d Å Å | i Å ~ Å i Å e { } ~ a ~ . .

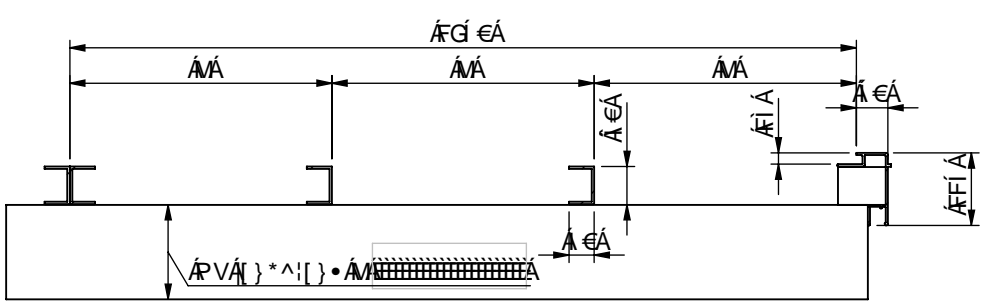
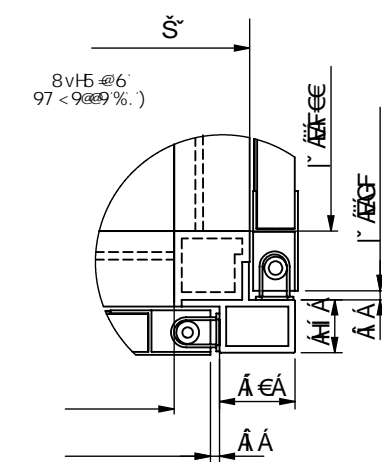
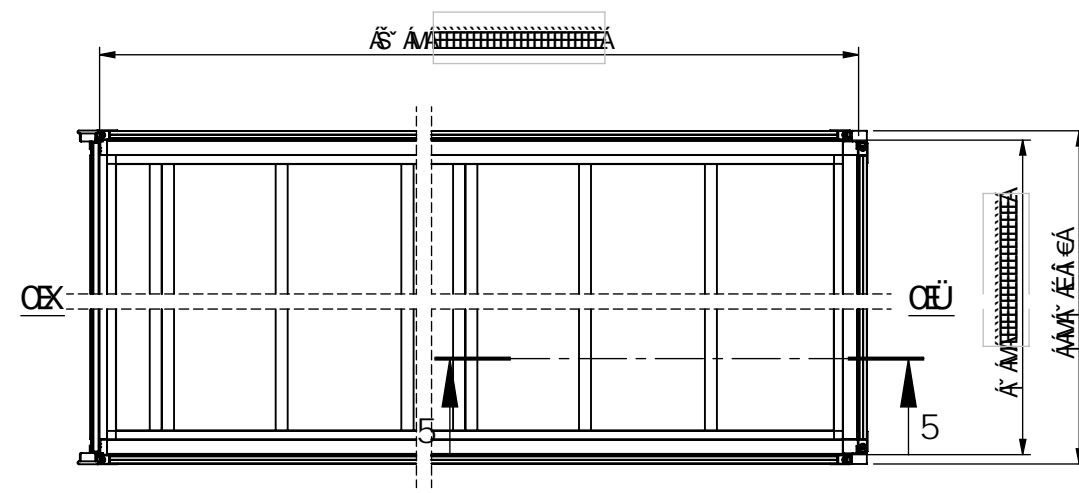
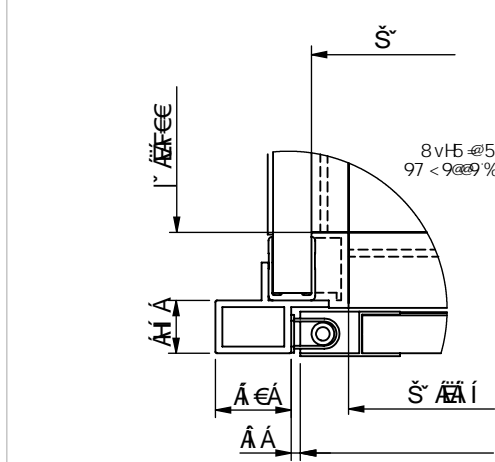
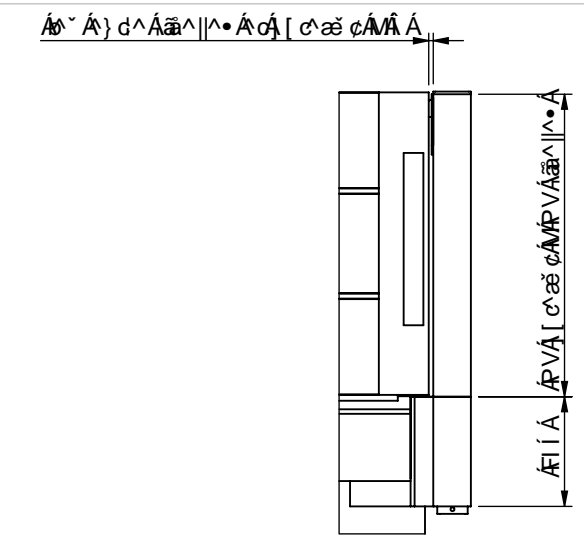
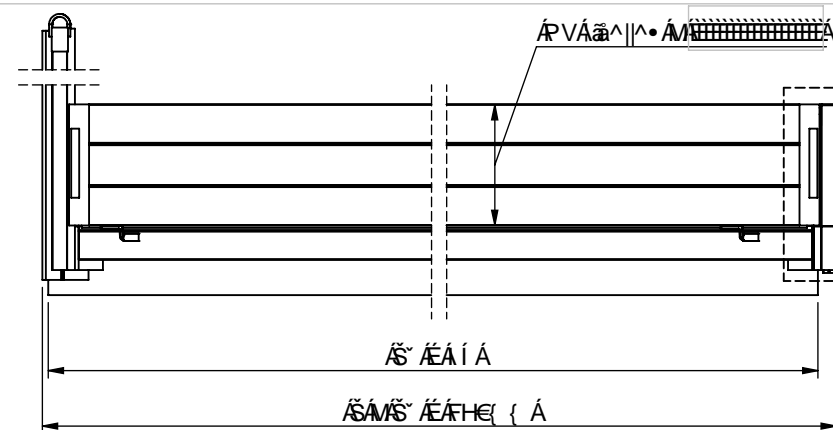
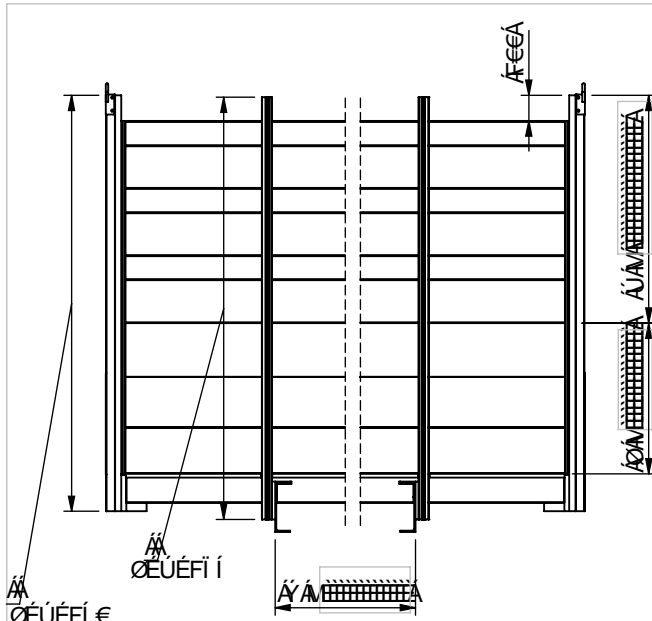


- Dimensions principales :**
- Lu -> Longueur utile
 - L -> Longueur hors tout
 - lu -> Largeur utile
 - I -> Largeur hors tout
 - X -> Ecartement du faux châssis
 - F -> Hauteur face avant
 - P -> Hauteur porte échelle

Plateau alu plancher alu (avec 2 ridelles par côté)

MEROUR Zone Industrielle
 21, rue Louis Brébion
 79400 Saint Maixent l'Ecole
 DE CARROSSERIE INDUSTRIELLE Tél. (33) 05 49 05 07 07
 Fax (33) 05 49 76 74 11

Ce dessin est la propriété de MEROUR et ne peut être reproduit ou communiqué



7 C I D 9 5 ! 5
97 < 90% . % &

Öä ^ } . q } . Á í q & q a p . Á k
 Š . Á E N Š I } * ^ . Á c p
 S A M E N Š I } * ^ . Á q } . Á í ~ ó
 | Á M E N Š e * ^ . Á c p
 | Á M E N Š e * ^ . Á q } . Á í ~ ó
 Y Á M E N Š e * ^ . Á c p & c { ^ } ó Á e c & c . . a
 Q Á M E N Š e c ^ Á e & Á e c
 U Á M E N Š e c ^ Á í c Á . & c | |

Úlæð að Ást & Ö / Á á

MEROUR Z I Á p á . d a j | Á
 G F Á . Á S I . a O . a a }
 LES ACCESSOIRES I J I e e U a a c t a a ^ } o c e j | Á
 DE CARROSSERIE INDUSTRIELLE. V. I Á C H D E Á J Á Á I Á Á
 c e c Á C H D E Á J Á Á I Á Á F

Ö Á . . q . . a . . d a j | | | | . c . Á Á Á Ö U U W Ü Á ó Á Á ^ . Á d Á Á | | | | . a . . a . . Á (.) . a . .

